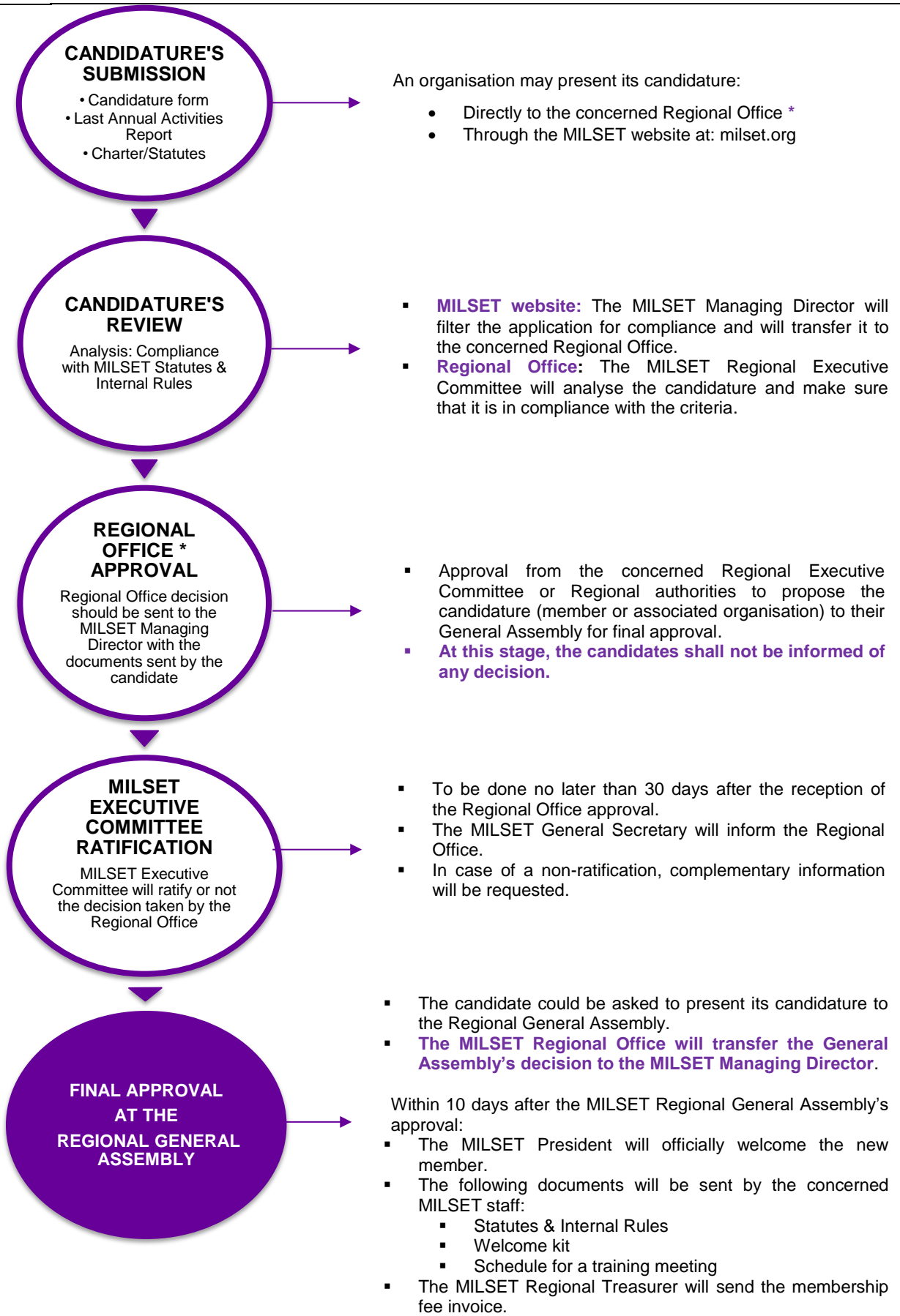


MILSET MEMBERSHIP PROCESS





CRITERIA TO EVALUATE MEMBERSHIP CANDIDATURES

In compliance with the MILSET:

Statutes

- Members shall be organisations active in STEAM activities or STEAM promotion for children and youth.
- A Regional Office shall have the authority to decide the types of organisations allowed as candidates for membership.
- National and regional organisations are preferred as MILSET members.
- Local organisations should be an exception.

Internal Rules

- If a national organisation is already a member, the member should be consulted before approving a new national, regional or local organisation in that country.
- If a national organisation exists, the Regional Office shall make every reasonable effort to recruit the organisation as a member.
- If a national organisation does not exist, a regional organisation may become a member.
- In countries where one or more national/regional organisations are MILSET member, local organisations (e.g. schools) must participate in MILSET activities through a member organisation.
- When a local organisation applies for membership, the Regional Office shall first determine whether an organisation with a larger (regional or national) scope exists in the country and shall make every reasonable effort to recruit the organisation as a member.
- If such an organisation does not exist, the local organisation may become a MILSET member.

* **Regional Office:** We use the term “Regional Office” to facilitate the understanding of the process since each region has the authority to decide on its membership approval process. Depending on their governance structure, it could be the Regional Executive Committee or the Regional Office.